
Section 2

Population and Demographics

Historic Population

At the time of the 2010 US Census, Buchanan County's population was 20,959 persons. US Census Bureau estimated the county's 2015 population to be 20,992, representing a 0.2 percent increase since 2010.

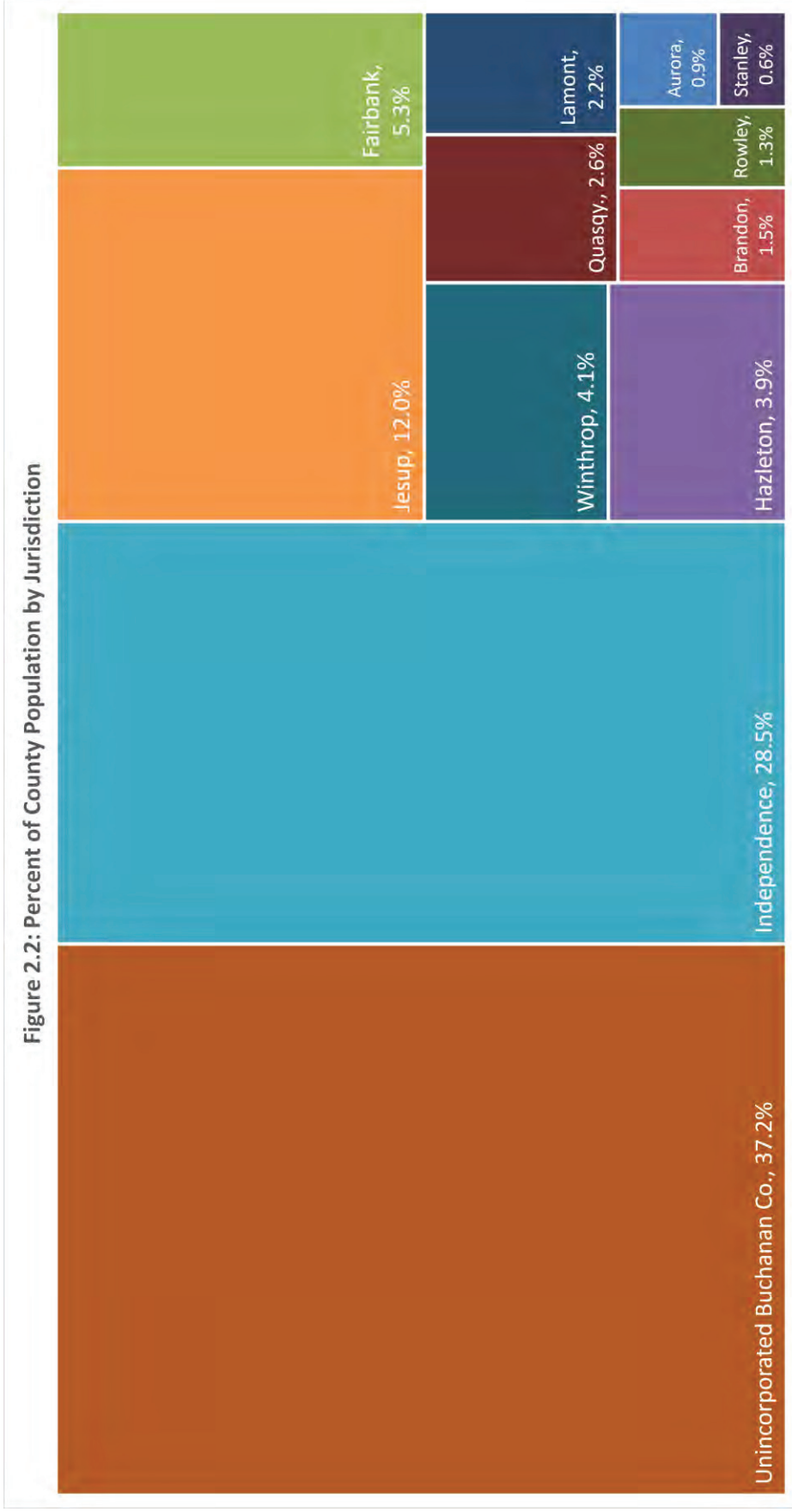
Figure 2.1, shown below, displays the population change in the county from the 1950 through 2015. The average population over the past seven census compilations (1950-2010) is 21,546 persons. During this timeframe, the population peaked in 1980 at 22,900 and dipped to a low of 20,844 in 1990. The struggling farm economy throughout the Midwest is attributed as the primary reason for the nine percent drop in population between 1980 and 1990. The most recent US Census, the population of Buchanan County had decreased by 0.6 percent between the years 2000 and 2010.

Despite its rural characteristic, Buchanan County ranks 29th in total population out of Iowa's 99 counties in 2010. However, the county falls well below the state's mean county population of 31,555. This is due to the state's high concentration of population in urban areas. According to 2015 population estimates, 35 percent of the state's population (1,137,459 persons) live in the state's five largest counties (Polk, Linn, Scott, Johnson, and Black Hawk).



The county's population is spread among the eleven (11) incorporated cities and unincorporated Buchanan County; Figure 2.2 shows the make-up of the county's population by jurisdiction.

As is evident, the majority of the population lives in one of three jurisdictions: unincorporated Buchanan County has the largest population, with approximately 37 percent. Independence, the largest city, represents the next highest portion of the population at 28 percent followed by Jesup at 12 percent. The other nine cities, combined, represent 23 percent of the county population.



Population Projections

Population projections are generally based on the assumption that past trends will continue in the future and can be calculated using a mathematical formula.

Two models were used to estimate population projections, Linear and Geometric. Both models are straight-line or averaging methods to predicting population change. Figure 2.3 shows the linear (number) and geometric (percent) change in the population from 1950-2010.

The *Linear method* uses the actual change in the total number of persons over a predetermined period in the community. From 1950 to 2010 the county averaged an increase of 5.2 persons every 10 years (between Census counts). From 1990 through 2010, the population increased by an average of 5.7 persons every ten years.

The *Geometric method* utilizes the percent change in population over that same period. From 1950 to 2010, the county population, on average, decreased by 0.02 percent every ten years. From 1990 to 2010, the county population increased a total of 0.3 percent.

Woods and Poole Economics is firm that specializes in long-term county economic and demographic projections for all U.S. counties. Projections factor more 900 variables.

Figure 2.4 shows the county's projected population of the county using the linear and geometric projections based on time periods of 1950-2010 and 1990-2010 and Woods and Poole data. The average of the projections in Figure 2.4 indicate that the county's population will be an estimated 21,074 persons in 2020 (+0.6% from 2010), 21,180 by 2030 (+1.1% from 2010), and 21,291 by 2040 (+1.6% from 2010).

Figure 2.3: Historic Population Trends, Buchanan County

Year	Census Population	# Change (Linear)	% Change (Geometric)
1950	20,927	-	-
1960	22,293	1,366	6.5%
1970	21,746	-547	-2.5%
1980	22,900	1,154	5.3%
1990	20,844	-2,056	-8.9%
2000	21,093	249	1.2%
2010	20,958	-135	-0.6%
Avg. Change. (1950-2010)		5.2	0.02%
Avg. Change (1990-2010)		5.7	0.3%

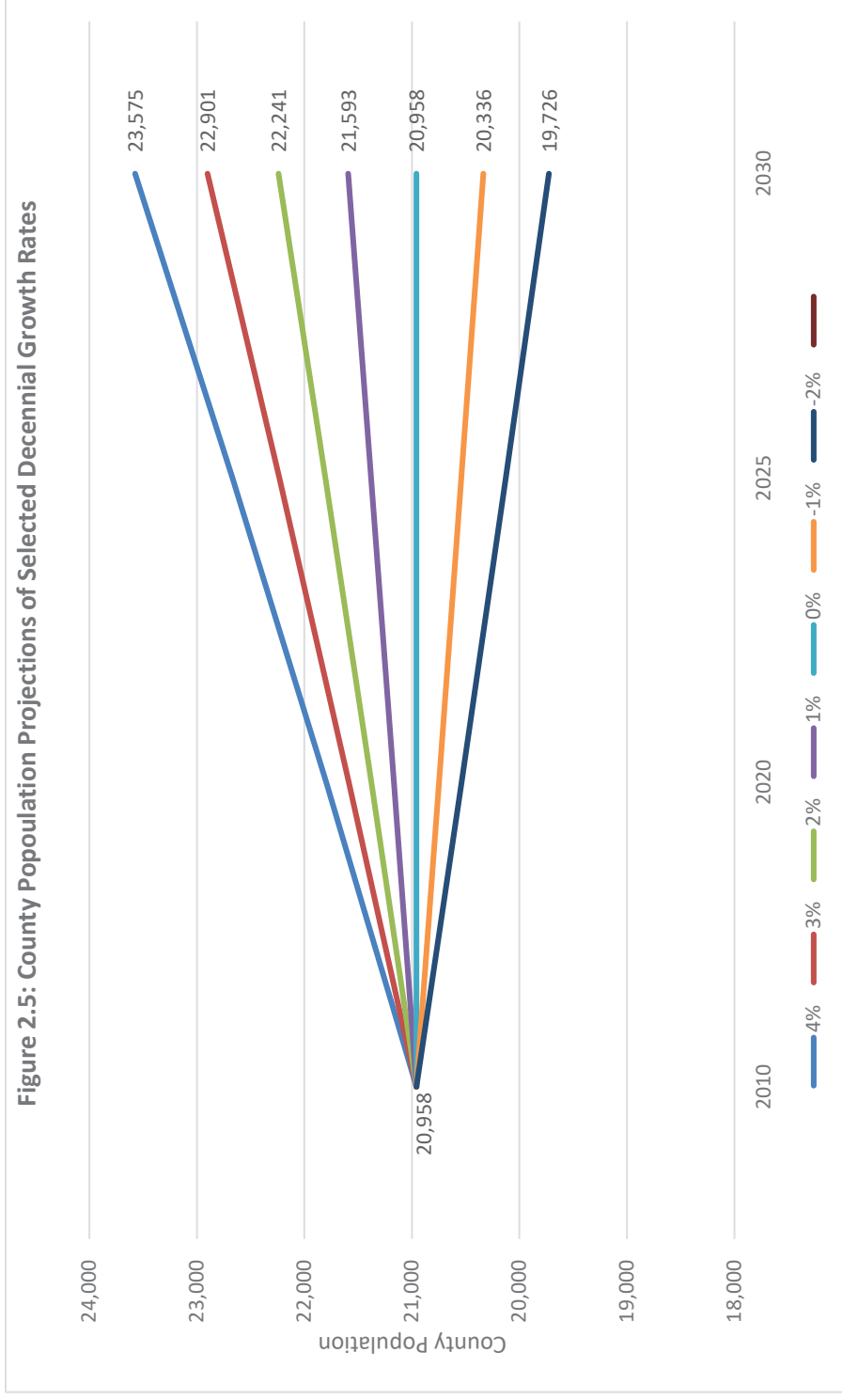
Source: US Census Bureau

Figure 2.4: Population Projections, Buchanan County

Projection Type	2010	2020	2030	2040
Linear				
1950-2010	20,958	20,963	20,968	20,973
1990-2010	20,958	20,964	20,969	20,975
Geometric				
1950-2010	20,958	20,962	20,966	20,970
1990-2010	20,958	21,000	21,042	21,085
Woods & Poole Economics, Inc.				
-	20,958	21,481	21,957	22,454
Average of Three Projections				
-	20,958	21,074	21,180	21,291

Source: US Census Bureau; Woods and Poole Economics Inc. US, Iowa, and its Counties: 2010-2040, obtained from Iowa Data Center; Calculations by INRCOG

Figure 2.5 depicts the potential county population by decennial population growth at varying percentages from -2 percent to 4 percent growth.



Age

Following state and national trends, Buchanan County has an aging population. Figure 2.6 displays the percentage of the county population by age groups using 1990, 2000, and 2010 Census data. As the “baby boomer” generation continues to age, the share of the county’s population of persons age 45 and over continues to increase.

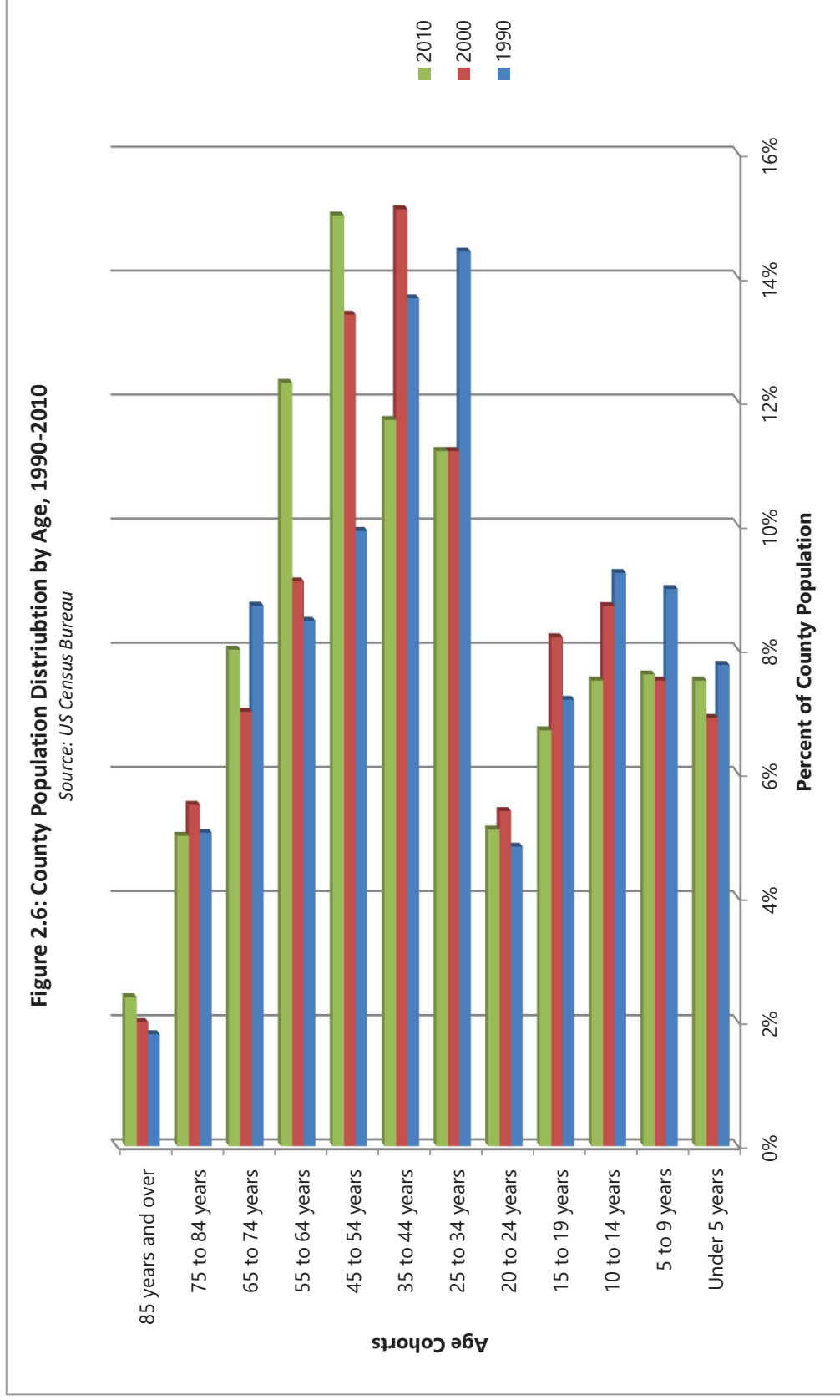


Figure 2.7 provides the breakdown of the population by age group between the years of 2000 and 2010. In terms of percent of population, increases were experienced in the older portion of the county population, with the greatest increase in the age groups of 45-64 (+998) and 65 and older (+139). The table also shows some age groups experiencing a significant decrease in persons. The age cohorts that experienced decreases were part of the county's younger population. Age groups with the largest decreases were 15-24 (-1,100), 25-44 (-739), and 0-14 (-144).

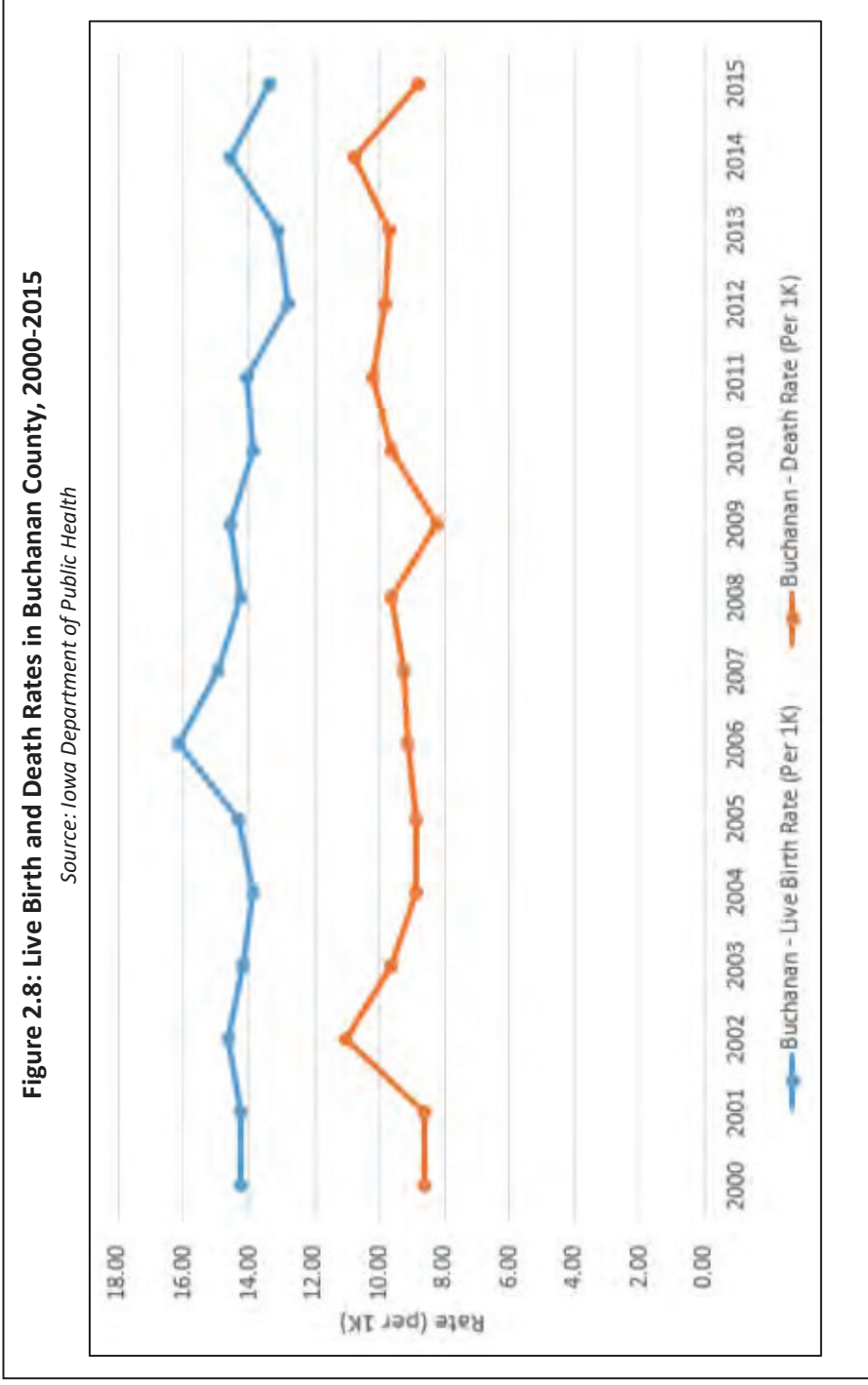
Figure 2.7: Age Cohorts of Buchanan County

Age Cohort (in years)	2000		2010		# Change, 2000-2010
	#	% of Total	#	% of Total	
0-14	4,869	22.3%	4,725	22.6%	-144
15-24	3,573	16.4%	2,473	11.8%	-1,100
25-44	5,549	25.4%	4,810	23.0%	-739
45-64	4,747	21.7%	5,745	27.4%	998
65+	3,056	14.1%	3,195	15.2%	139
Total	21,794	100.0%	20,948	100.0%	-846
Median Age	36.4		39.0		+2.6 years

Source: US Census Bureau, calculations by INRCOG

According to Census data, the County's 2010 median age was 39.0. This is older than the State of Iowa's 2010 median age (38.1) as well as the United States' median age (37.2). As the population continues to age, the county can expect to continue to see an increase of its elderly population.

Figure 2.8 illustrates Buchanan County's natural population change by comparing the number of live births and deaths. According to available data from 2000 through 2015, births have regularly outpaced deaths in the county. In 2015, the county experienced nearly 13 live births and 8 deaths per 1,000 persons.



The world has seen a significant drop in the death rate, leading to an increased global population. In the United States, birth rates have dropped due to cultural and economic trends, while death rates have risen, slowing population growth. In Iowa, both figures have held relatively steady, and most population change can be attributed to migration.

Gender

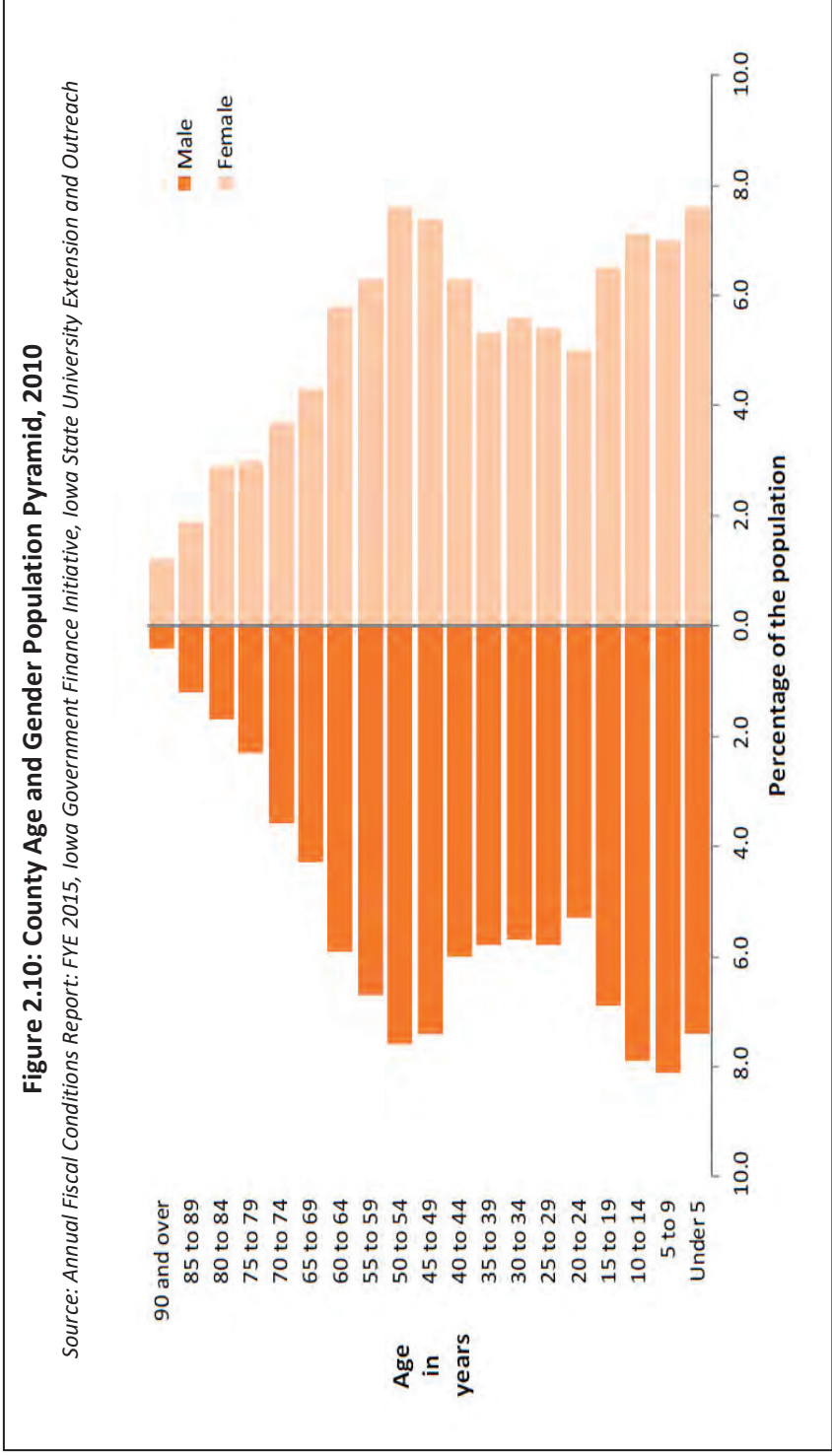
According to Census data, the county's population has slightly more women than men. Figure 2.9 details the gender of Buchanan County residents as reported in the 2000 and 2010 Census.

The small variance in sex can be attributed to women's longer life expectancy. Hence, women also make a larger portion of the county's elderly population (65 or greater) than men, as indicated in Figure 2.10.

Figure 2.9: Sex of County Residents

Gender	2000		2010	
	#	% of Total	#	% of Total
Female	10,617	50.3%	10,557	50.4%
Male	10,476	49.7%	10,401	49.6%
Total	21,093	100%	20,958	100%

Source: US Census Bureau



Race and Ethnicity

Figure 2.11 shows the breakdown of the county population by race in 2000, 2010 and 2015 estimates. Overall, the table indicates that the county is becoming slightly more diverse. White or Caucasian was the predominant category with 97.8 percent of residents identifying as such in 2010. Also, while not recognized as a race category by the Census Bureau, persons of Hispanic origin numbered 243 persons in 2010 compared to 131 persons in 2000.

Census guidelines define Race as such¹:

White: A person having origins in any of the original peoples of Europe, the Middle East, or North Africa. It includes people who indicate their race as "White" or report entries such as Irish, German, Italian, Lebanese, Arab, Moroccan, or Caucasian.

Black or African American: A person having origins in any of the Black racial groups of Africa. It includes people who indicate their race as "Black, African Am., or Negro"; or report entries such as African American, Kenyan, Nigerian, or Haitian.

American Indian and Alaska Native: A person having origins in any of the original peoples of North and South America (including Central America) and who maintains tribal affiliation or community attachment. This category includes people who indicate their race as "American Indian or Alaska Native" or report entries such as Navajo, Blackfeet, Inupiat, Yup'ik, or Central American Indian groups or South American Indian groups.

Asian: A person having origins in any of the original peoples of the Far East, Southeast Asia, or the Indian subcontinent including, for example, Cambodia, China, India, Japan, Korea, Malaysia, Pakistan, the Philippine Islands, Thailand, and Vietnam. It includes people who indicate their race as "Asian Indian," "Chinese," "Filipino," "Korean," "Japanese," "Vietnamese," and "Other Asian" or provide other detailed Asian responses.

Native Hawaiian and Other Pacific Islander: A person having origins in any of the original peoples of Hawaii, Guam, Samoa, or other Pacific Islands. It includes people who indicate their race as "Native Hawaiian," "Guamanian or Chamorro," "Samoan," and "Other Pacific Islander" or provide other detailed Pacific Islander responses.

Two or more races: People may have chosen to provide two or more races either by checking two or more race response check boxes, by providing multiple responses, or by some combination of check boxes and other responses.

¹ Race Definitions, US Census Bureau, www.census.gov/quickfacts/meta/long_RHI225215.htm

Between 2000 and 2015 the county's white population decreased by 153 persons (-0.7 percent). The County's non-white population more than doubled from 236 to 485 in 2015. All minority groups, except for Native Hawaiian and Pacific Islander, experienced positive population growth during this same period – resulting in a net population gain. While still remaining very homogeneous, Buchanan County is becoming more racially diverse which follows state and national trends.

Figure 2.11: Race of County Residents, 2000-2015

Race	2000		2010		2015		% Change, 2000-2015	Net Change, 2000-2015
	#	% of Total	#	% of Total	#	% of Total		
White	20,667	98.4%	20,505	97.8%	20,514	97.7%	-0.7%	-153
Black or African American	57	0.3%	67	0.3%	79	0.4%	38.6%	+22
American Indian & Alaskan Native	45	0.2%	32	0.2%	73	0.3%	62.2%	+28
Asian	85	0.4%	90	0.4%	95	0.5%	11.8%	+10
Native Hawaiian & Pacific Islander	1	0.0%	1	0.0%	0	0.0%	-100.0%	-1
Other Race	34	0.2%	36	0.2%	78	0.4%	129.4%	+43
Two or More Races	114	0.5%	227	1.1%	159	0.8%	39.5%	+45
Total	21,093	100%	20,958	100%	20,998	100%	0.5%	-95

Source: 200 and 2010 US Censuses; 2011-2015 ACS 5-Year Averages

The US Census Bureau collects data on race based on self-identification. The racial categories included in the census questionnaire generally reflect a social definition of race recognized in this country and not an attempt to define race biologically, anthropologically, or genetically. In addition, it is recognized that the category of race includes racial and national origin or sociocultural groups. People may choose to report more than one race to indicate their racial mixture, such as "American Indian" and "White." People who identify their origin as Hispanic, Latino, or Spanish may be of any race². Figure 2.12 shows the ethnicity of county residents.

Figure 2.12: Hispanic and Latino Ethnicity of County Residents, 2000-2015

Race	2000		2010		2015		% Change, 2000-2015
	#	% of Total	#	% of Total	#	% of Total	
Hispanic or Latino	131	0.6%	243	1.2%	296	1.4%	125.9%
Mexican	86	65.6%	160	65.8%	195	65.9%	126.7%
Puerto Rican	11	8.4%	18	7.4%	-	-	-
Cuban	3	2.3%	7	2.9%	101	34.1%	-
Other Hispanic or Latino	31	23.7%	58	23.9%	-	-	-
Not Hispanic or Latino	20,962	99.4%	20,715	98.8%	20,702	98.6%	-1.2%
White alone	20,667	98.6%	20,344	98.2%	20,294	98.0%	-1.8%
Black or African American			59	0.3%	79	0.4%	-
American Indian & Alaskan Native			22	0.1%	67	0.3%	-
Asian			90	0.4%	95	0.5%	-
Native Hawaiian & Pacific Islander	295	1.4%	1	0.0%	0	0.0%	-
Other Race			4	0.0%	8	0.0%	-
Two or More Races			195	0.9%	159	0.8%	-
Total Population	21,093	100%	20,958	100%	20,998	100%	-0.5%

Source: 200 and 2010 US Census; 2011-2015 ACS 5-Year Averages

² Race Definitions, US Census Bureau, www.census.gov/quickfacts/meta/long_RH1225215.htm